

# **EVR Cargo Ltd**

## **Start of a journey on 1520mm railway network**

Tallinn 2013



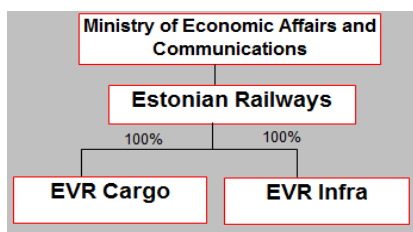
## About us

1870	First route opened between Paldiski – Tallinn – Narva – Gatchina (near St. Petersburg)
1918	Independent Estonian Railways (EVR) was established
1992	State-owned company AS Estonian Railways established
2009	Restructuring of Estonian Railways: EVR Infra (infrastructure) EVR Cargo (transport)
2012	Separation of AS EVR Cargo

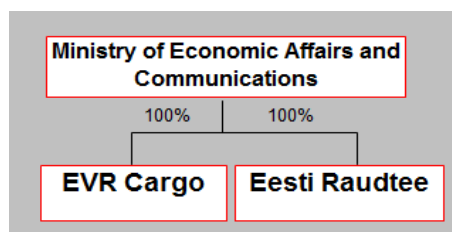
**We are part of 1520 mm network**



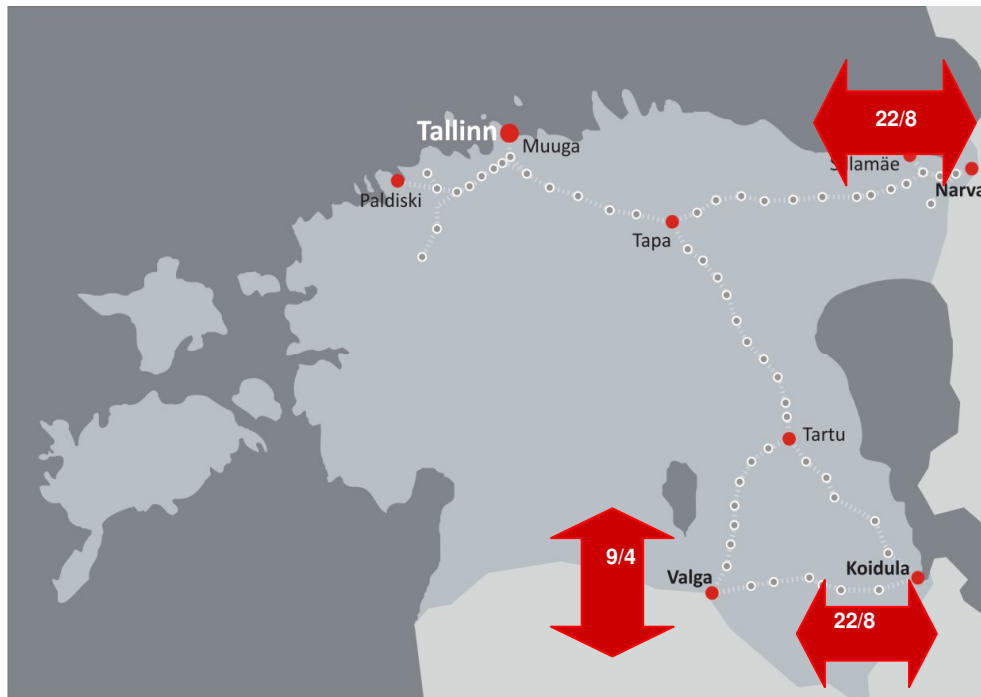
**Until 31.8.2012**



**From 1.9.2012**



# Infrastructure in Estonia



- Three border stations:
  - Narva (to/from Russia)
  - Koidula (to/from Russia)
  - Valga (to/from Latvia)
- Total length of tracks: 1320 km
- Length of EVR owned main railway lines: 691 km
- After each 30km, tracks for long (1500m) trains

*Maximum throughput/today's average throughput of a border station*



## Sufficient and efficient locomotive fleet



- C36-7i, US origin (56)

- ЧМЕ-3, Check origin shunting locomotives (15)
- Will be replaced in 2012-2013



- 2TE116, Ukraine origin (4)





## Variety of wagons for different type of cargo

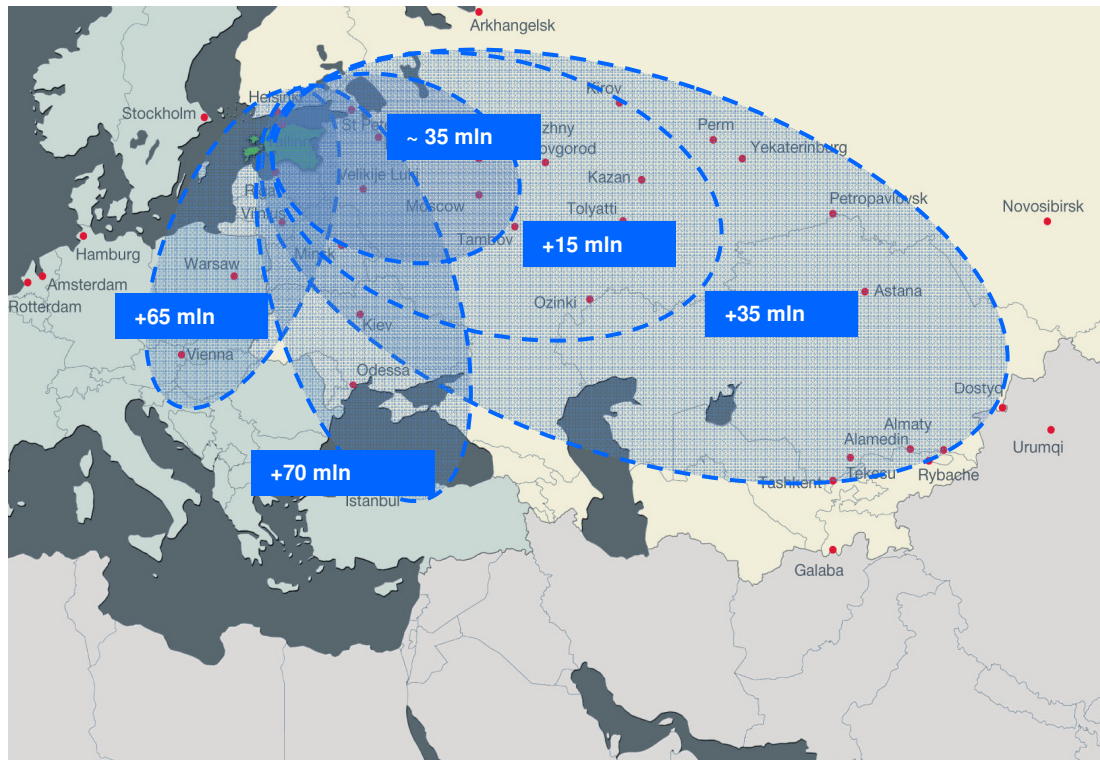


- Variety of wagons for different cargo i.e heavy and oversized cargo, containers, liquid and dry bulk, fertilizers etc
- 3353 own wagons in total, increasing about 5% per year



## Wide geographical areas are served through Estonia

*More than 250 million consumers are located within the service areas of Baltic sea ports*

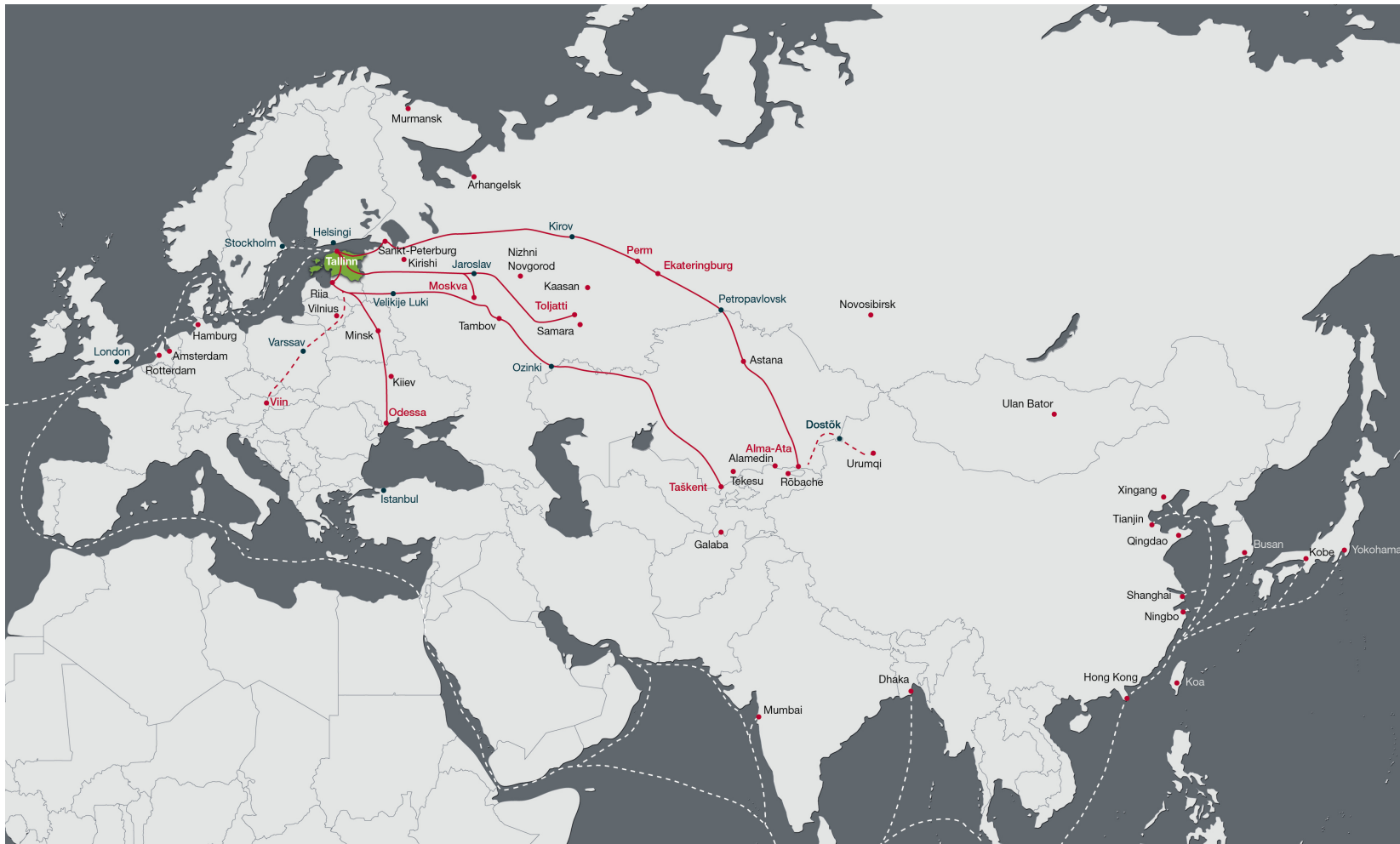


▪ Strategic service areas for container transportation:

- North-west Russia;
- Russian European part,
- Central Asia
- Black-Sea area
- Central Europe



**Containers that arrive to Estonia by sea (usually via Port of Hamburg) and are delivered to CIS and Central Asia by several container block-trains**





## Block-trains offer regularity and good delivery times



*Note: Single or groupage shipments are possible to transport all over 1520 mm network*



To **Moscow** delivery time  
2.5 days, up to 4 departures  
a week

To **Kaluga** delivery time 3  
days, 3 departures a week

To **Kiev and Dnepropetrovsk**  
delivery time 5 days, 1  
departure a week

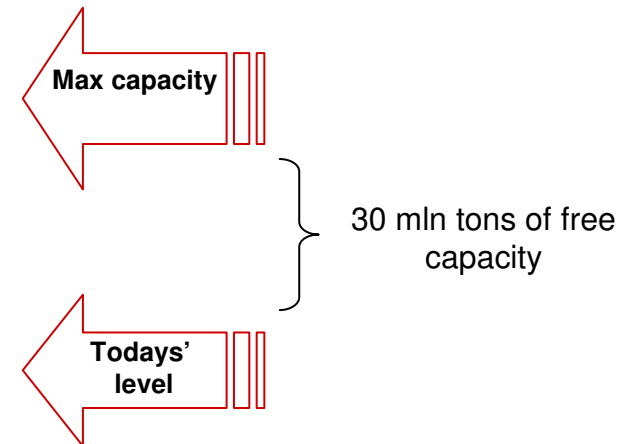
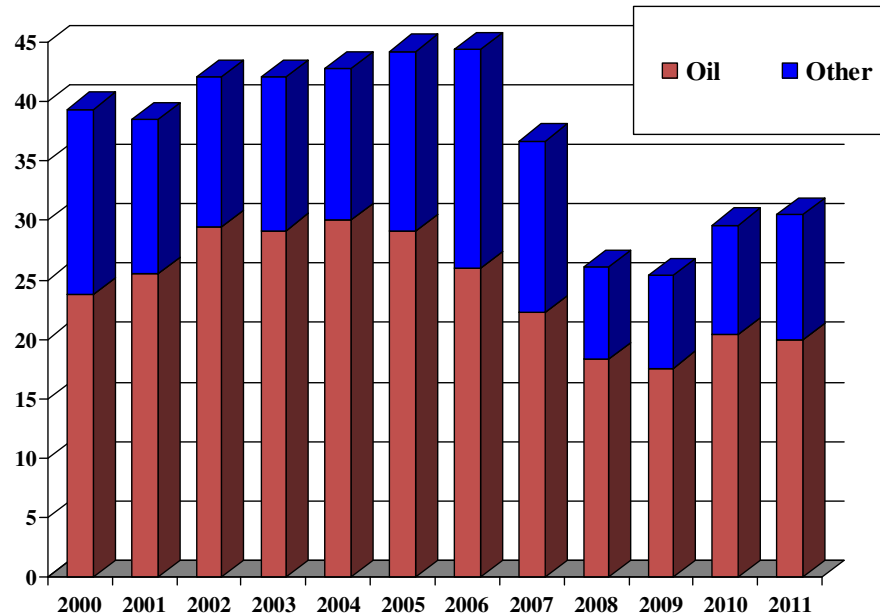
To **Jekaterinburg** 4 days,  
seasonally 1 departure per  
week

To **Central Asia**, delivery  
time 10 days

To **Afghanistan**, delivery  
time 14 days



**Today, there are more than 30 mln tons of free capacity, to grow both Bulk and Container business**



Port capacities	Millions of tons						000' TEU Containers
	Oil	Coal	Grain	Fertilizers	Other	Total	
Port of Tallinn	43	5.5 - 7.5	3-5	2.5	3	58.5	450
Port of Sillamae	3			1	0.5	4.5	
Paldiski Nort Port					1	1	
Port of Kopli	2					2	
Port of Miiduranna	2					2	
Port of Bekkeri					0.7	0.7	
<b>Total</b>	<b>50</b>	<b>6</b>	<b>4</b>	<b>3.5</b>	<b>5.2</b>	<b>68.7</b>	<b>450</b>



# New Container Terminal developments support the increasing demand for container transportation

## Port of Muuga



New container terminal  
(capacity 350.000  
TEU/year)

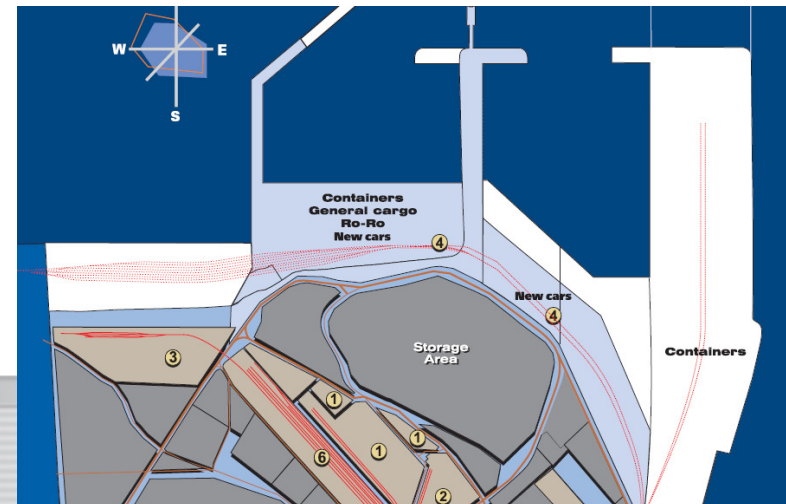
## Container terminals in Muuga

- MCT – existing container terminal with 450 000 TEU capacity
- Rail Garant, the new operator will add 250.000 TEU per year to the port, mainly export from Russia. Expected start 2013 - 2014

Existing container  
terminal (capacity  
450.000 TEU/year)

## Silport Container Terminal in Sillamäe

- Opening on 2013



# EVR Cargo services

- Rail transportation of containers
  - Block-trains, groupage and single shipments to/from different destinations/origins in CIS countries
- Rail transportation in different other bulk and non-bulk goods:
  - By using different railcars: box-cars, open top, tanks etc
  - Import, Export, transit via Estonia
  - Block-Trains, groupage or single wagon shipments
- Rental of railcars
  - EVR Cargo owns more than 3000 railcars, which are available also for rental
- Railcar & locomotive maintenance
- Different other additional services related to rail transportation





# Thank You!

For more info see:

[www.evrcargo.ee](http://www.evrcargo.ee)

[cargo@evrcargo.ee](mailto:cargo@evrcargo.ee)

[container@evrcargo.ee](mailto:container@evrcargo.ee)

